



IT'S ALWAYS  
**GREEN**  
IN QUARRY PARK

e: [QuarryParkLOA@remingtoncorp.com](mailto:QuarryParkLOA@remingtoncorp.com)

w: [remingtoncorp.com](http://remingtoncorp.com)

## QUARRY PARK NEWS



**INSIDE: NEW AMENITIES  
SET FOR 2016 OPENINGS**  
More on page 1 & 2.



## AMENITIES OPENING IN 2016

### The Remington YMCA Quarry Park Recreation Facility

Scheduled to open in mid 2016, the 95,000 sq.ft. recreation centre will include an aquatic centre, gymnasium, fitness centre and running track, multi-purpose rooms, child minding and child care, a public library, and retail spaces. Future expansion may include a Field House. The facility is being constructed by the City of Calgary and it will be operated by the YMCA. Remington is proud to be the Facility's lead sponsor and benefactor.





## Quarry Park Child Development Centre

Remington is developing the Quarry Park Child Development Centre, a state of the art facility that will serve approximately 350 children under six years of age. Operated by the YMCA and slated to open in mid 2016, the Centre is over 35,000 sq.ft. and will include a secure outdoor play area to encourage natural play in a child-oriented environment.

For more information on these exciting and new community amenities, visit the What's New tab on [remingtoncorp.com/residential](http://remingtoncorp.com/residential)







IT'S ALWAYS  
**GREEN**  
IN QUARRY PARK

## THE GATES HAVE BEEN OPENED

Remington's latest residential project has opened. Residents of The Gates at 39 Quarry Gate started taking possession of their new residences in July 2015. The project has been fully landscaped and an attractive park and waterfall, located adjacent to the front elevation of the property, have also been completed. The park and waterfall provide a notable gateway to the Bow River and Quarry Park Nature Reserve. Sales activity at The Gates has been active. Stop by the Remington Residential Presentation Gallery for a peek at a furnished Gates residence.





## QUARRY PARK UPDATES

### Hotel

The Market at Quarry Park includes a future hotel site at the property's south end. Remington has initiated work on this hotel development project and there will be announcements at a future date.

### South Campus

The five building South Campus will be complete and fully occupied by the spring of 2016. To date, two buildings are occupied.

### East-West Regional Pathway

Construction and landscaping work on the Quarry Park canal pathway is anticipated for completion this autumn. The original pathway was closed as construction commenced on the South Campus project. The reopening of the pathway will allow all residents and users of Quarry Park to fully experience the exceptional landscaping and pathway systems in the community.

South Campus



## TRANSPORTATION MATTERS

### 24th Street Improvements

Important progress is being made on 24th Street prior to the end of the 2015 construction season. A checklist of items in progress includes:

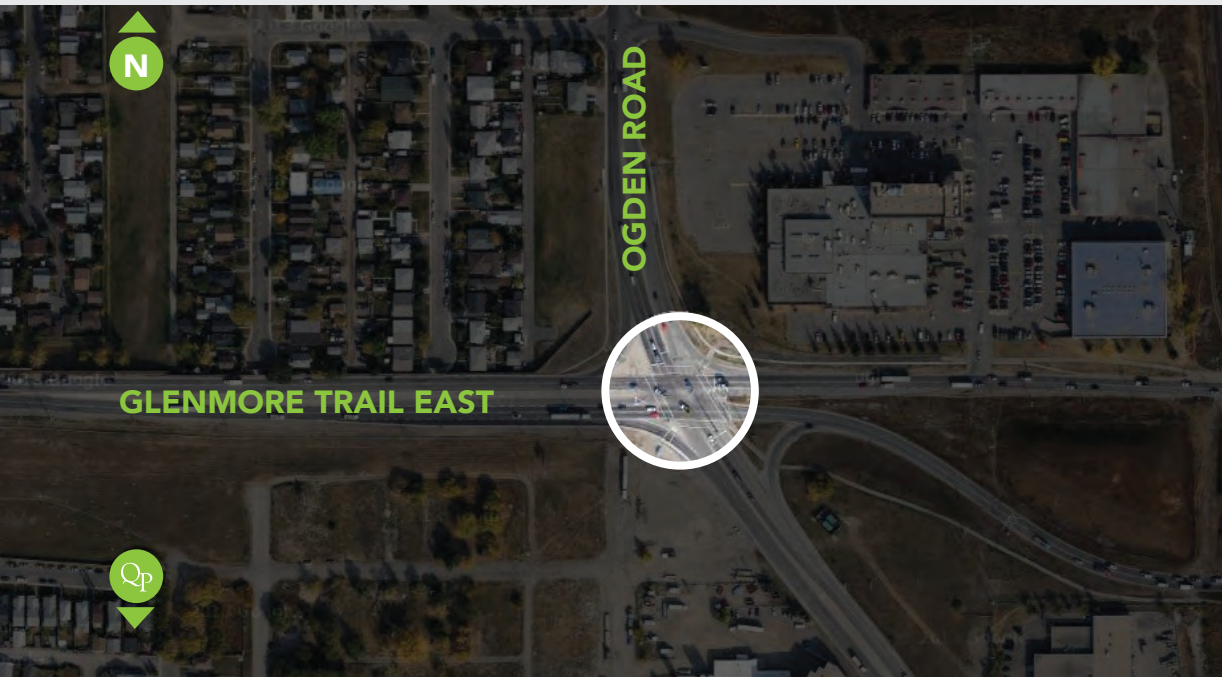
- **Top lift pavement improvements in specific areas between 107th Avenue and 114th Avenue**
- **Boulevard landscaping on the east side of 24th Street between the curb and sidewalk**
- **Median construction between 107th Avenue and Quarry Park Boulevard**
- **Street light installation**
- **Landscaping**
- **Signals at the intersection of 24th Street and Quarry Park Boulevard**





## The Glenmore and Ogden Interchange

The Glenmore Trail and Ogden Road S.E. Interchange Project is a City of Calgary initiative designed to significantly improve mobility in the Quarry Park area, among other area benefits. The Project includes an interchange at Glenmore Trail and Ogden Road S.E. and an overpass spanning the Western Headworks Canal and the Canadian Pacific Railway and Canadian National Railway tracks. The bridge over the tracks will enable the City to have complete grade separation for the existing 302 BRT (Bus Rapid Transit) and the future LRT (Light Rail Transit) lines. The project is scheduled for completion in late 2017.





## Greenline Southeast Transitway

The Green Line Southeast Transitway is 26km and includes 15 new transit stations. One of those stations will be situated right here in Quarry Park at 24th Street and Quarry Park Boulevard. The first stage of construction is expected to commence in 2017 and will involve construction from 4th Street Southeast in the City's core to Douglas Glen. Initially, the Greenline was initially planned to be constructed over a +/- 30 year period starting as a bus-only transitway and then later converting to LRT. However, the July 24th announcement by the Federal government means that Calgarians will benefit from fast and more reliable light rail transit ahead of schedule. For more information, visit the City of Calgary website and search 'Green Line.'



PROPOSED LRT: SOUTHEAST GREEN LINE





## QUARRY PARK'S NEW ADDITION: QUARRY LANDING

Most residents in Quarry Park are familiar with the Lafarge manufacturing facility located directly across the Bow River. Remington Development has acquired this land with plans and a vision for redevelopment. Branded as Quarry Landing, the site will one day include an office campus, supporting retail and potentially a hotel. Quarry Park and Quarry Landing may also be connected by a pedestrian and cycle bridge. Remington Development is working with the City of Calgary and other stakeholders on this exciting addition to Quarry Park.





## AROUND THE COMMUNITY

### Race for Pace

The 8th annual Remington Race for Pace will take place right here in Quarry Park on Saturday, August 29th. The walk or run event is a fundraiser for children with disabilities and it is one of numerous charitable events supported by Remington Charities. Embrace your inner superhero and learn more at [raceforpace.ca](http://raceforpace.ca)

### The Cardel Quarry Park & Polish Auto Show

Once again Cardel Homes is proud to partner with Mothers Against Drunk Driving (MADD) for a day of hot rods, mods, tuners, exotics and more. The Cardel Homes Quarry Park & Polish Auto Show will be held Saturday, September 5th from 10am to 5pm. Visit [quarryparkandpolish.com](http://quarryparkandpolish.com) for more information.

### 2nd Annual Child Safety Event

The Douglasdale/Glen and Quarry Park Community Association is hosting their 2nd Annual Child Safety Event on September 15th. Remington Development Corporation is pleased to support the event again this year. For times and details, contact the Community Association.





## Community Gardens

Interested in meeting other community members, enjoying time outdoors and growing fruits and vegetables in a local community garden? The DouglasGlen Community Association (DGCA) has recently constructed a community garden in the community of Douglasdale (in the sports fields across from Swifty's) and it is open to residents of Douglasdale, DouglasGlen and Quarry Park. An annual membership is just \$30 and the membership amount includes workshops and a personal plot. A great way to put fresh fruits and vegetables on your table. Contact Holly Clark at [garden@dgca.ca](mailto:garden@dgca.ca)

## Calgary Artists Way

The Calgary Artists Way is comprised of 54 original works of art that have been replicated on 93 banners and installed on designated lamp-posts in Douglasdale, DouglasGlen, Quarry Park and Riverbend, specifically 18th Street in Quarry Park. Local artists and photographers plus art from local schools have donated their creations to the CAW. The banners are a City of Calgary program. You can read more at [www.dgca.ca/douglasdale\\_glen\\_community\\_association\\_home/1](http://www.dgca.ca/douglasdale_glen_community_association_home/1)

## Champagne Sales Update

Owners in Building 4 are currently taking possessions and Building 5 is scheduled for occupancy this winter. In total, Champagne is 80 percent sold.

<b>Building #1:</b>	<b>SOLD OUT</b>
<b>Building #2:</b>	<b>SOLD OUT</b>
<b>Building #3:</b>	<b>92% SOLD</b>
<b>Building #4:</b>	<b>89% SOLD</b>
<b>Building #5:</b>	<b>50% SOLD</b>

